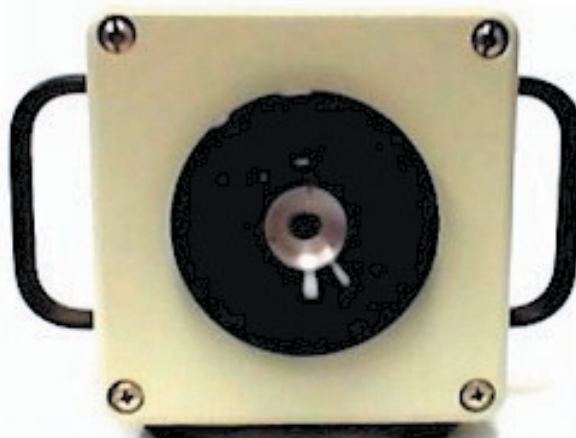
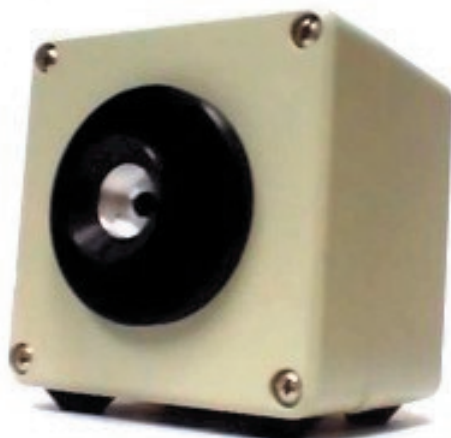




## **CAM\IR 2003**

**MEDICAL  
PROCESS CONTROL  
CONDITION MONITORING  
AND  
SECURITY APPLICATIONS**



- The Cam\IR 2003 thermal imaging system offers a revolutionary approach to thermal analysis

- Convert any IBM compatible PC into a high-resolution thermal imager while the system's camera provides for non contact temperature measurements

- With the Cam\IR 2003 you can study and verify thermal performance

- High resolution images allow comprehensive steady-state thermal analysis to be conducted in fractions of the time required with thermocouples

- With our standard software, Infrared, Inc. Image IR\2000, the Cam\IR 2003 becomes a powerful data acquisition and thermal analysis system

- Standard TIFF file formats assure compatibility with many software packages

- Windows 95/98 compatibility means images can be cut and pasted into word processing applications for report writing and printing of images

- Optional Infrared, Inc. Image\IR 2000 software permits automatic monitoring and logging of temperatures on as many as 100 user defined areas

**[www.infrared.com](http://www.infrared.com)**

## Cam\IR 2003 Specifications

<b>Performance:</b>	Temperature Range:	-20°C to 300°C, Auto-cal for 0°C to 80°
	Measurement Accuracy:	1.2% to 40°C, 2% to 80°C, 5% to 300°C
	Field of View:	50°(H) x 35°(V)
	Instantaneous FOV:	5.4 mrad
	Focus Range:	5cm (2") to infinity
	Detector:	160 x 120 Uncooled Silicon Bolometer FPA
	Spectral Band:	7.0 to 14.0 microns
	Image Update Rate:	30 Frames/sec
	Sensitivity / NETD	0.10°C @ 30°C
	Emissivity Setting:	Operator selectable within WinTES-2
	Emissivity Correction:	0.01 to 1.00
	Ambient Correction:	Provided by PC and Image IR\2000 software.
	Ambient Compensation:	Provided by PC and Image IR\2000 software.
	Measurement Function:	Provided by PC and Image IR\2000 software.
	Image Zoom	Provided by PC and Image IR\2000 software.
<b>Display:</b>	A/D Resolution	12 bit
	Display Color	Several standard & optional 255-color maps
	ISO Band Display:	Provided by PC and WinTES-2 software.
	Auto Function:	Manual Focus. Auto Level, Auto Gain for video.
	Auto Gain Control (AGC)	Selectable
	Image Processing Function:	Provided by PC and Image IR\2000 software.
	Viewfinder:	Provided by PC and Image IR\2000 software.
	Software:	Provided by PC and Image IR\2000 software.
<b>Interface:</b>	Communication:	USB
	Video Output:	SMPTE - 170M (NTSC) std, PAL optional.
	Data Memory:	Provided by PC
<b>Environmental:</b>	Operating Temperature:	18°C to 25°C
	Storage Temperature:	-40°C to 80°C
	Enclosure	Cast Aluminum, sealed, with 1/4-20 mount
<b>Electrical:</b>	Power Supply:	95-125 V AC; 95-250 V AC, 45-65 Hz optional.
	Power Requirements:	6V to 24VDC
	Battery Operation:	180 mins (2 AA std alkaline)
<b>Physical Characteristics:</b>	Camera Dimensions:	12cm x 12cm x 12cm (4.7" cube)
	Camera Weight:	1.45kg (3.2 lb) plus battery or power converter
<b>Optional:</b>	Lenses:	Optional lenses -- TBA
	Heavy Duty Tripod	TBA
	Roll-about camera stand	TBA