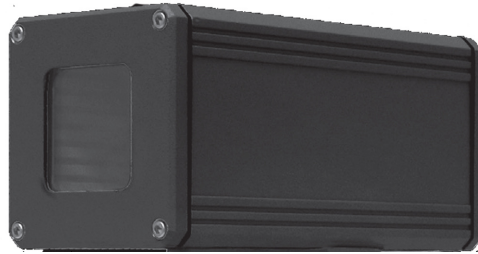


# CAM\IR 2700



Thermal imagers are passive and non-intrusive, detecting day or night and in most weather. As a result, they are invisible to intruders, allowing security personnel to monitor their actions without their knowledge, protecting people and assets before they are exposed to danger. CAM\IR 2700 is a cost-effective thermal imager suited to a variety of applications including: **military, law enforcement, security, and covert operations.** It features plug and play capabilities which allow it to be integrated into existing CCTV security system architecture or it can operate alone. It is small yet effective for large area coverage and perimeter security. It also features numerous customizable options including dual image with a visual camera.

## Features:

- Advanced L3 Technology
- Full motion and real time video
- Eliminates need for enhanced light
- Reduces energy costs
- Day or night full image resolution
- Cost-effective
- Plug and play compatibility with CCTV interfaces
- Optional window wiper assembly
- Thermostatically controlled heating and cooling
- Weatherproof machined enclosure
- O ring sealed

## Options:

- Wireless
- Hardwire
- Fibre Optic
- Temperature measurement at center with crosshair
- Direct, computer, or LAN control
- Heavy duty pan and tilt
- Dual image with visual camera
- Control Software
  - Thermofind™ Motion Detection
  - Thermatect™ Thermal Detection

## CAM\IR 2700 Specifications

### Focal Plane Array

Material and Structure: Amorphous Silicon Microbolometer (160 x 120 pixel array)

Spectral Response: 7-14 $\mu$ m (filter bandwidth)

Thermal Sensitivity: < 50 mK

Refresh Rate: Real-Time 30Hz

### Thermal Imaging System Performance

Start-up Time: ~3 seconds

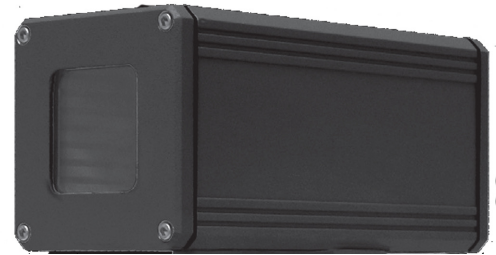
Contrast/Brightness: Automatic/Advanced Image Processing

Range to Detect Human Activity:

11° FOV: Up to 1500ft (475m)

17° FOV: Up to 1000ft (305m)

32° FOV: Up to 550ft (170m)



### Optics

Focal Length	8.5 mm	16 mm	25 mm
FOV (H x V)	32° x 24°	17° x 12°	11° x 8°
Focus	Manual	Manual	Manual

### Video

Output Format	NTSC: Real-Time 30Hz	PAL: Real-Time 25Hz
Output Resolution:	NTSC: 640x480	PAL: 768x574

### Power

Input Voltage: 8-32 VDC

Input Power: 1.2 W @25° C ambient

### Physical Characteristics

Size: 9"L x 3.75"W x 2.6"H (22.86cmL x 9.53cmW x 6.6cmH)

Weight: 30 oz. (0.85Kg)

Color: Black, White, Olive, Tan, custom

Operating Temperature: -20° C to 60° C

Storage Temperature: -40° C to 85° C



Model numbers and specifications are subject to change without notice.

### Additional Camera Functions

- Optional white-hot/black-hot polarity control
- Optional temperature indication of scene at central crosshair
- Customizable display symbology for temperature indication option
- Serial data port (RS-485) for camera setup