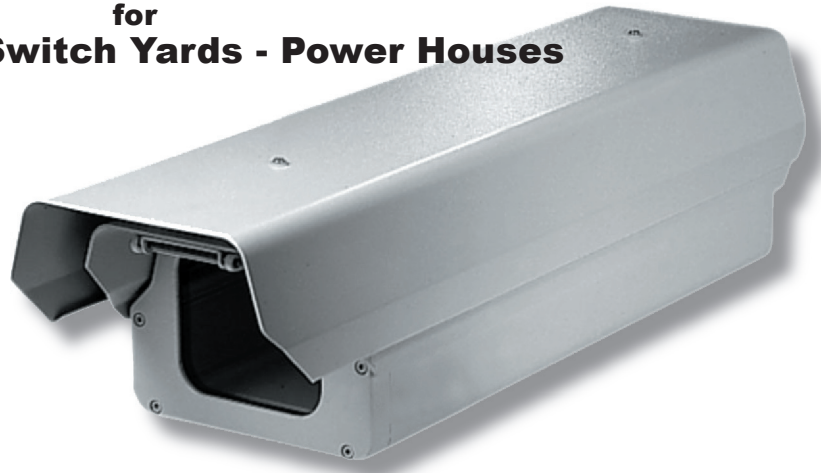




## CAM\IR 2700P

**All-In-One Security and Condition Monitoring System  
for  
Substations - Switch Yards - Power Houses**



Thermal imagers are passive and non-intrusive, detecting day or night and in most weather. As a result, they are invisible to intruders, allowing personnel to monitor their actions without their knowledge, protecting people and assets before they are exposed to danger. CAMIR 2700 is a cost-effective thermal imager suited to a variety of applications including **equipment monitoring and security**. It features plug and play capabilities which allow it to be integrated into existing CCTV security system architecture or it can operate alone. It is small yet effective for large area coverage, perimeter security, and equipment monitoring for substations and power company applications.

### Features:

- Advanced L3 Technology
- Full motion and real time video
- Eliminates need for enhanced light
- Reduces energy costs
- Day or night full image resolution
- Cost-effective
- Plug and play compatibility with CCTV interfaces
- Optional window wiper assembly
- Thermostatically controlled heating and cooling
- Weatherproof enclosure
- O ring sealed

### Options:

- Wireless
- Hardwire
- Fibre Optic
- Temperature measurement at center with crosshair
- Direct, computer, or LAN control
- Heavy duty pan and tilt
- Dual image with visual camera
- Control Software
  - Thermofind™ Motion Detection
  - Thermatect™ Thermal Detection
- Mobile or Fixed

## CAM\IR 2700 Specifications

### Focal Plane Array

Material and Structure: Amorphous Silicon Microbolometer (160 x 120 pixel array)  
Spectral Response: 7-14 $\mu$ m (filter bandwidth)  
Thermal Sensitivity: < 50 mK  
Refresh Rate: Real-time 30Hz

### Thermal Imaging System Performance

Start-up Time: ~ 3 seconds  
Contrast/Brightness: Automatic/Advanced Image Processing  
Range to Detect Human Activity:  
11° FOV: Up to 1500 feet (475 meters)  
17° FOV: Up to 1000 feet (305 meters)  
32° FOV: Up to 550 feet (170 meters)

### Optics

Focal Length	8.5 mm	16 mm	25mm
FOV (H x V)	32° x 24°	17° x 12°	11° x 8°
Focus	Manual	Manual	Manual

### Video

Output Format	NTSC; Real-Time 30hz Frame Rate PAL; Real-Time 25hz Frame Rate
Output Resolution	NTSC 640x480 pixels for higher clarity PAL 768 x 574 pixels for higher clarity

### Power

Input Voltage: 2-3.2 VDC & 8-16 VDC  
Input Power: ~1.2 W @ 25° C ambient, 3VDC

### Physical Characteristics

Size: 10.5"L x 5.5"W x 5.25"H with heat shield  
7.5"L x 4"W x 4.5"H without heat shield  
Weight: approx. 4 lbs.  
Color: Black, White, Olive, Tan, custom  
Operating Temperature: -4°F to 185°F (-20°C to 85°C)  
Storage Temperature: -40°F to 221°F (-40°C to 105°C)

### Additional Camera Functions

- Expansion port w/ real-time digital video and USB 2.0 compatible controls interface
- Customizable absolute temperature colorization
- White-hot or black-hot polarity selectable
- Electronic Zoom from 2X to 5X and electronic iris
- Selectable temperature indication of scene at central crosshair
- Optional GUIs for customization and control (user parameters, symbology overlay, color, real-time control)



Model numbers and specifications are subject to change without notice.