

PRODUCT SPECIFICATIONS

PalmIR 250 Thermal Imaging Solutions

PalmIR 250

CHOOSING A PORTABLE INFRARED CAMERA HAS JUST GOTTEN A LOT EASIER.

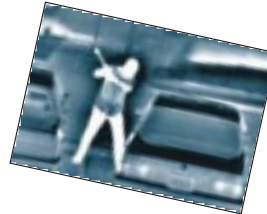
NightSight has long been regarded as a leader in infrared technology. Now the PalmIR 250 takes our proven technology one step further by putting it in a device that offers the greatest ease-of-use in the entire industry.



PalmIR 250 Camera

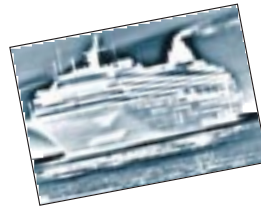
SURVEILLANCE APPLICATIONS

Law enforcement, indoor grow detection, border patrol, perimeter security, forest fire fighting.



MARINE APPLICATIONS

Oil spill response, search and rescue, navigational aid.



INDUSTRIAL APPLICATIONS

Predictive maintenance inspection for power transmission and machinery, process monitoring, roofing, energy audits and building diagnostics.



Raytheon

To find out more about the most affordable, easiest-to-use portable camera the industry has to offer, call us today at 1-800-990-3275 (U.S.) 972-344-4000 (Int.). PalmIR 250. The difference is easy to see.

SEE THE UNSEEN



RAYTHEON COMMERCIAL INFRARED

PRODUCT SPECIFICATIONS

PalmIR 250

Thermal Imaging Solutions

PalmIR 250

OPTIONAL EQUIPMENT

ALTERNATE LENSES:

- *50 mm with PalmIR Twist-Lock Interface (Manual Focus)*
- *100 mm with Motorized Focus and PalmIR Twist-Lock Interface (Motorized Focus for Remote Installations)*
- *150 mm with Motorized Focus and PalmIR Twist-Lock Interface (Motorized Focus for Remote Installations)*
- *Twist-Lock Lens Mount (Required to Mount Alternate Lenses)*

ACCESSORIES:

- *Extra Batteries*
- *Neck Strap*
- *DCP-77 Adapter (Battery Eliminator)*
- *Extra Hardcase*
- *Extra Charger*
- *Operator's Manual*

PERFORMANCE PARAMETERS:

Detector Type/Format	Uncooled ferroelectric (320 x 240)
Spectral Response	7 to 14 microns
Thermal Stabilization	Thermoelectric cooler
Video Update Rate	30 Hz – real time
Time to Operation [Typical]	<30 seconds @ 25°C
Standard Lens	75 mm; f/1.0
Field of View	12° x 9°
Focus Range	20 feet minimum to infinity
Range to Detect a Person	2400 ft

INTERFACES:

VCR Compatible Video Output	SMPTE-170M [RCA jack]
External Control	RS-232 serial communications port

ELECTRICAL:

Power Source	Rechargeable camcorder battery (6VDC)
Power Consumption [Typical]	<3.5 watts
Power Conservation	"Standby" mode
Operating Time per Charge	>4 hours with supplied battery

PHYSICAL:

Dimensions	9.5" L x 4" W x 4" H
Weight Without Battery	2.6 pounds
Ergonomic Design	One hand operation
Mounting Provisions	Tripod mount

ENVIRONMENTAL:

Operating Temperature	-20° to 49°C
Storage Temperature	-40° to 80°C
Water Resistance	Splashproof [IEC pub. 529 IPX4]
Operating Humidity	0 – 95% non-condensing

STANDARD EQUIPMENT

- Camera w/ Lens Cover
- AC/DC Battery Charger
- Rechargeable Camcorder Battery (NiMH)
- Operator Manual
- Lens Cloth
- Durable Carrying Case



CALL US TODAY AT:

1.800.990.3275 (U.S.) 972.344.4000 (Int.)

© NightSight, PalmIR and the Infrared branding mark are trademarks of Raytheon. ISO 9001

Raytheon



RAYTHEON COMMERCIAL INFRARED